



## 1b Pumphouse Lane

Mirfield, WF14 0AW

A two bedroom detached bungalow conveniently positioned a short distance to the centre of Mirfield and local amenities. This has evidently been a much loved home for many years and now presents an exciting opportunity for the next owners to put their own stamp on it and unleash its full potential. Public transport links are also on hand, including the railway station in the centre of town connecting the neighbouring towns and cities such as; Huddersfield, Leeds and Manchester, as well as having a direct line to London. Motorway networks are also nearby. The driveway provides plenty of off road parking and leads to the detached single garage. Set to the rear is a spacious garden providing spaces to sit out and relax. NO CHAIN.

£250,000

# 1b Pumphouse Lane

Mirfield, WF14 0AW



- TWO BEDROOM DETACHED BUNGALOW
- A SHORT DISTANCE LOCAL AMENTIES & MIRFIELD TOWN CENTRE
- WOULD BENEFIT FROM SOME UPGRADES BUT OFFERS EXCITING POTENTIAL
- DRIVEWAY PROVIDING OFF ROAD PARKING
- LARGE REAR GARDEN & SINGLE GARAGE
- NO CHAIN

Entrance

Dining Kitchen

Lounge

Bathroom

Bedroom One

Bedroom Two

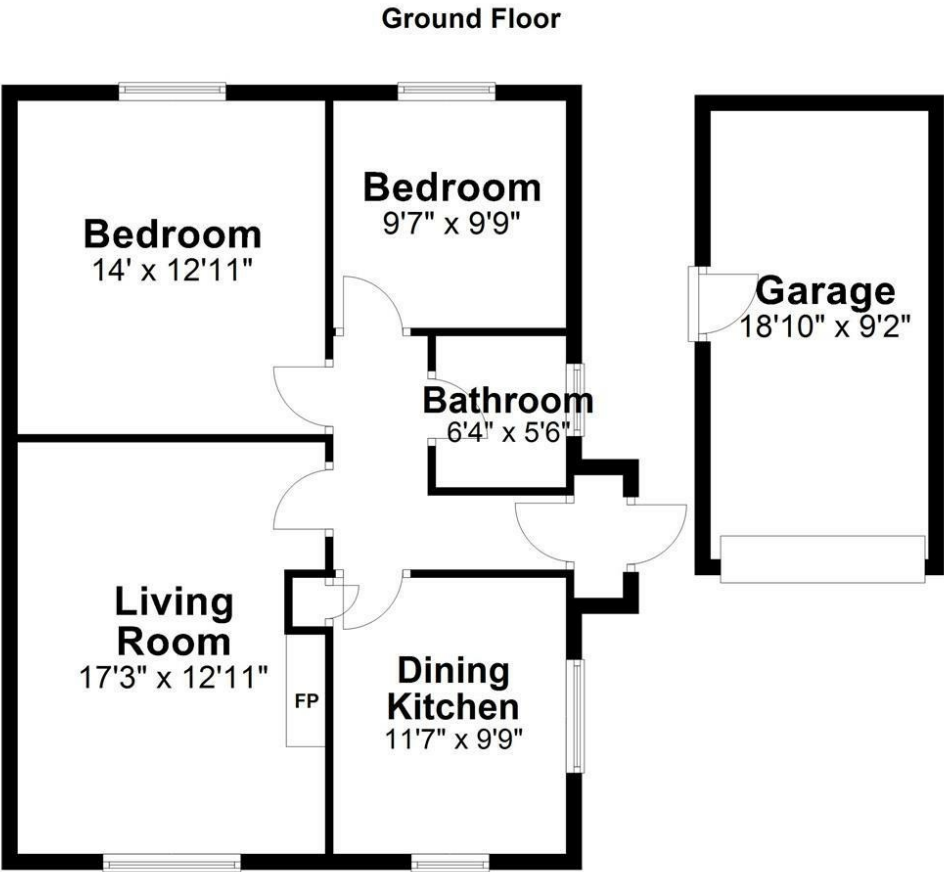
Garden, Driveway & Garage







Floor Plan



Total area: approx. 913.5 sq. feet

Sketch Plan For Illustrative Purposes Only. All measurements of walls, doors, windows, fittings, and appliances including their sizes and location are shown conventionally and are approximate only. This cannot be regarded as being a representation either by the Seller, his Agent or DY Energy Assessors  
Plan produced using PlanUp.

**Pumphouse Lane, Mirfield**

These particulars, whilst believed to be accurate are set out as a general outline only for guidance and do not constitute any part of an offer or contract. Intending purchasers should not rely on them as statements of representation of fact, but must satisfy themselves by inspection or otherwise as to their accuracy. No person in this firms employment has the authority to make or give any representation or warranty in respect of the property.

